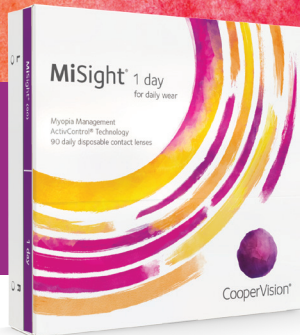




MiSight® 1 day
for daily wear

YOUR KIDS SHOULD GROW STRONGER

Their nearsightedness shouldn't.



Brilliant Futures™
Certified Eye Doctor

Your guide to getting the most out of the
Brilliant Futures™ Myopia Management Program

Welcome to Brilliant Futures™ with MiSight® 1 day



Congratulations on taking the first step toward keeping your child's future brilliant with MiSight® 1 day—the first and only FDA-approved* soft contact lens proven to slow the progression of myopia in children, aged 8-12 at initiation of treatment.^{1†}

MiSight® 1 day lens



Child Friendly¹

59%

**Slows Myopia Progression
on average^{1†}**



FDA-Approved*

Indications and Important Safety Information. Rx only. Results may vary. **ATTENTION:** Reference the Patient Information Booklet for a complete listing of Indications and Important Safety Information. ***Indications:** MiSight® 1 day (omafilcon A) soft (hydrophilic) contact lenses for daily wear are indicated for the correction of myopic ametropia and for slowing the progression of myopia in children with non-diseased eyes, who at the initiation of treatment are 8-12 years of age and have a refraction of -0.75 to -4.00 diopters (spherical equivalent) with ≤ 0.75 diopters of astigmatism. The lens is to be discarded after each removal. **Warnings:** Problems with contact lenses could result in serious injury to the eye. Do not expose contact lenses to water while wearing them. Under certain circumstances MiSight® lenses optical design can cause reduced image contrast/ghosting/halo/glare in some patients that may cause difficulties with certain visually-demanding tasks. **Precautions:** Daily wear single use only. Patient should always dispose when lenses are removed. No overnight wear. Patients should exercise extra care if performing potentially hazardous activities. **Adverse events:** Including but not limited to infection/inflammation/ulceration/abrasion of the cornea, other parts of the eye or eyelids. Some of these adverse reactions can cause permanent or temporary loss of vision. If you notice any of the stated in your child, immediately have your child remove the lenses and contact your eye care professional.

†Compared to a single vision 1 day lens over a 3 year period.

With you every step of the way—so your child can shine

Many parents report feeling a little overwhelmed when first learning about their child's myopia, — so if that's how you're feeling now, don't worry! Now, you can be confident in the **first and only FDA-approved*** soft contact lenses that control myopia in children aged 8-12 at the initiation of treatment. **MiSight® 1 day** lenses will not only correct your child's vision today, but has been shown to slow the progression of myopia over time in age-appropriate children.¹

The resources and tools below were specifically created for you. They will help guide you and your child through your Brilliant Futures™ journey with MiSight® 1 day.

Download the MiSight® App in the App Store or Google Play

Your eye doctor has already set you up in the app, you should receive an email from BrilliantFutures@misightapp.com prompting you to complete the registration process.

(If you haven't seen it come to your inbox yet, be sure to let your eye doctor know.)



Once in the app, you can:



View lens insertion and removal videos with your child



Learn more about myopia



Get reminders and tips along your child's journey



View upcoming appointments

Hear from kids who have worn MiSight® 1 day lenses

Many parents and kids have been right where you are—at the start of their MiSight® 1 day journey. Scan the QR code to see how it impacted their confidence in school, sports, and more.

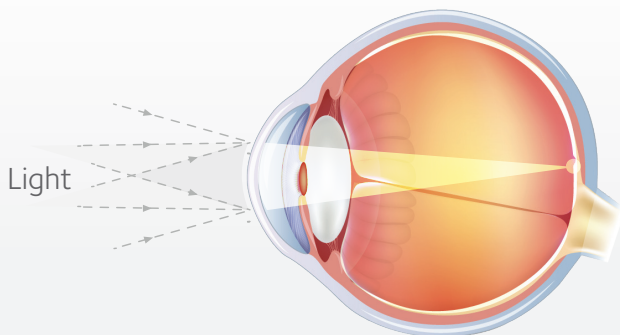


Brilliant Tip: It's a good idea to always keep extra lenses with your child, and to let their teachers, coaches, and other supervising adults know they have them on hand.

Myopia is on the rise—in its frequency and its severity²

Myopia is a common visual condition which makes far away objects appear blurry. This happens because the eye is longer than it should be.

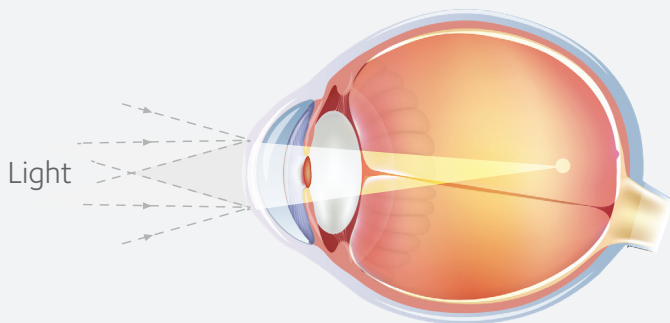
Eye without myopia



Clear
Vision



Eye with myopia



Blurry
Vision



Myopia is unfortunately irreversible

Myopia often gets worse as your child's eyes continue to grow longer. This is known as myopic progression, which leads to prescription increases over time.

Both genetics and modern lifestyles, such as **increased screen time and less outdoor time**, are linked to the increase in myopia.³⁻⁵ In fact, according to the Center for Disease Control (CDC), kids ages 8-10 now average **6 hours per day** in front of a screen, while youth ages 11-14 spend nearly **9 hours a day** in front of a screen.⁶

In addition, researchers predict a sharp increase in myopia due to **skyrocketing digital device usage and increased indoor time**.⁷



Myopia Simulator

See myopia through
your child's eyes



Myopia control today could mean less worry tomorrow

Myopic progression increases the risk of severe eye health complications and sight-threatening conditions later in life, including^{2, 8-7}:

Retinal detachment⁹

A condition that occurs when the retina, a thin layer of tissue that lines the inside of the eye, pulls away from supportive layers of blood vessels that provide its necessary oxygen and nourishment

Myopic maculopathy¹⁰

A condition that can start in one's 40s,¹¹ myopic maculopathy is caused by the deterioration of the central portion of the retina, and is a leading cause of severe, irreversible vision loss

Glaucoma¹²

A condition that causes progressive damage to the eye's nerve fibers, potentially causing irreversible vision loss. Studies show people with myopia have a 2x greater risk of developing glaucoma

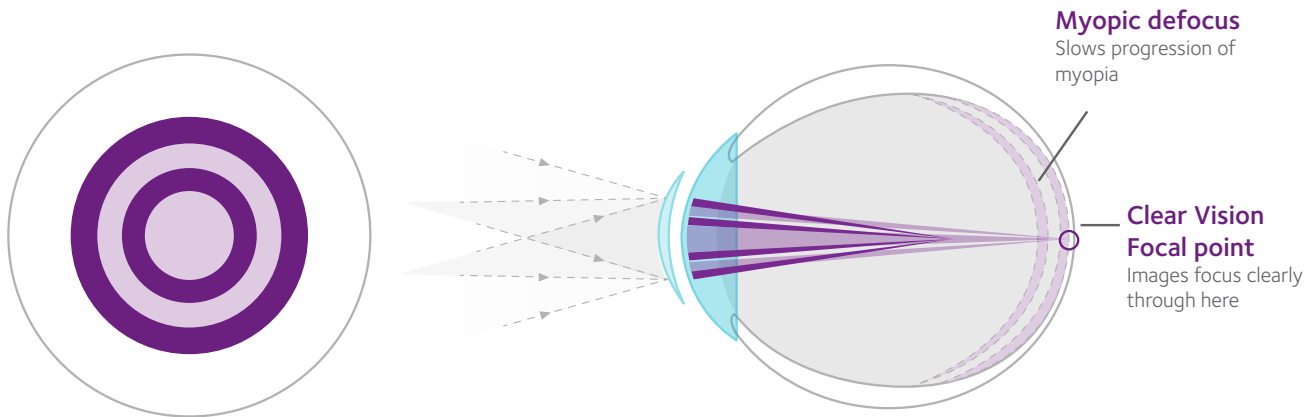
Cataracts²

A clouding of the lens inside of the eye that can cause challenges in vision correctable only with surgery. Though cataracts can affect everyone as they age, they often develop sooner in patients with myopia

Here's the good news

As a parent, helping your child wear MiSight® 1 day consistently is one of the best things you can do for their future eye health.

MiSight® 1 day myopia control contact lenses are dual-purpose. With ActivControl® Technology, children (aged 8-12 at the initiation of treatment) will be able to see clearly with the contact lenses, while slowing down the progression of their myopia by 59% on average.^{1, 13†}



- Treatment zones creating myopic defocus
- Correction zones

It's the first and only FDA approved* soft contact lens proven to slow the progression of myopia in children aged 8-12 at the initiation of treatment, by reducing eye lengthening by 52% on average.^{1**}

* **Indications:** MiSight® 1 day (omafilcon A) soft (hydrophilic) contact lenses for daily wear are indicated for the correction of myopic ametropia and for slowing the progression of myopia in children with non-diseased eyes, who at the initiation of treatment are 8-12 years of age and have a refraction of -0.75 to -4.00 diopters (spherical equivalent) with ≤ 0.75 diopters of astigmatism. The lens is to be discarded after each removal.

† Compared to a single vision 1 day lens over a 3 year period.

4 Facts About Contact Lenses for Kids

Clinical studies show that contact lenses are generally safe for children to use, but parents may understandably be hesitant.

Studies have shown that:

- **9 of 10 children** as young as 8 years old are able to apply and remove their lenses on their own.^{14**}
- The incidence of side effects in children 8-12 years old are similar to adults, and in some cases is considerably lower.¹⁵
 - In fact, the use of daily disposable contact lenses is **safer** compared to reusable contact lenses.^{16*}
- It only takes younger children about 15 minutes longer than teens to learn how to apply and remove their lenses.¹⁷
- Contact lenses also improved how the children felt about themselves, their appearance, self-esteem, and ability to perform activities.¹⁷



Easy guide to putting in contact lenses

1

WASH YOUR HANDS



Use soap and water. Rinse well and dry your hands with a towel that isn't too fluffy.

2

OPEN THE LENS PACK



Make sure you pick up the correct lens for each eye - always start with the same eye first. Scoop the lens out of the package and place it onto your finger tip so it's curving up like a bowl.

3

APPLY YOUR LENSES



Using the hand that isn't holding your contact lens, hold your top eyelid still. Then, lower your bottom eyelid and gently place the lens on your eye. Once the lens is on your eye you can let your eyelids go and blink gently. It's okay to have an adult with you until you feel ready to put your lenses in and take them out by yourself.

4

CHECK YOUR WORK



To see if your lenses are in, blink slowly and gently. If everything feels good and you can see, you're ready to go!



Scan the QR codes below to view these helpful videos.

View the insertion video
with your child



See helpful tips for removing
your child's contacts



*Versus reusable soft CLs (2-week or monthly replacement).

**By 1 month. As reported by parents.

Your roadmap to a brilliant future

You and your child are on the right path—keep moving forward with a few tips for a great first week, a spectacular first month, and a brilliant future

Week 1

Many parents report feeling a little overwhelmed in the first week, and express concern about whether their child is getting the hang of handling the lenses fast enough. **Don't worry!** Your child doesn't need to be perfect. At this point, the goal is simply for your child to begin establishing a consistent routine and getting practice with the lenses. Removal is often easier than insertion. So just do your best!

Your child will be provided all of the lenses they need while enrolled in the **Brilliant Futures™ Myopia Management program**, so you won't have to worry about prescription changes or needing extra lenses while your child is first learning.



Brilliant Tip: It's critical to see your doctor at the end of week 1. To make the most of the appointment, write down any questions that come up in the blank notes section on the right side of this page, and bring this booklet to the appointment.

Week 1 Appointment

(lens trial follow up with your eye doctor)

_____ : _____ AM/PM on

_____, (day) ____/____/_____ (date)

Month 1

In just a few short weeks, handling the lenses will feel a lot easier. That's when the vast majority of children feel they've mastered it.¹³ If they're still having some challenges, be sure to reassure them they will get the hang of it soon. And they can always contact the doctor's office for support and additional help.¹⁴



Brilliant Tip: For the best long-term outcomes, it's recommended to wear the lenses for at least **10 hours a day, 6-7 days per week.**¹ One way to remember this is to make sure your child's lenses are applied when they are getting ready for school and removed as they're getting ready for bed.

Month 1 Appointment

(check in with your eye doctor)

_____ : _____ AM/PM on

_____, (day) ____/____/_____ (date)

Every age-appropriate child with myopia deserves MiSight® 1 day -

the first and only FDA-approved soft contact lenses to slow the progression of myopia in children (aged 8-12 at the initiation of treatment)*

- Slowed the progression of myopia by 59% on average over three years^{1*}
- Reduced eye lengthening by 52% on average over three years^{1*}
 - In fact, 41% of kids originally fit with MiSight show no progression of myopia after 3 years^{1*}
 - Incredibly, even after 6 years, 1 in 4 eyes originally fit with MiSight still show no progression^{19†}
- Provided a comfortable experience for children who wear contact lenses¹³
- Children reported a significantly better quality of life compared to children wearing glasses²⁰

By helping your child continue to wear MiSight® 1 day lenses, you're helping to keep them on the path to a brilliant future.



Be a champion for children's eye health by sharing your experience using **#MiSight #BrilliantFutures** on Facebook or Instagram!

For inquiries about MiSight® 1 day lenses or concerns, please call 1-855-5-COOPER or 1-855-526-6737. Our consumer care hours of operation are 9:00 AM - 5:00 PM ET, Monday - Friday.

*Compared to single vision lens. -0.25D or less of change. Fitted at 8-12 years of age at initiation of treatment.

†-0.25D or less of change. Fitted between at 8-12 years of age at initiation of treatment.

References: **1.** Chamberlain P, et al. A 3-year randomized clinical trial of MiSight lenses for myopia control. *Optom Vis Sci.* 2019;96(8):556-567. **2.** Younan C, et al. Myopia and incident cataract and cataract surgery: the Blue Mountains Eye Study. *Invest Ophthalmol Vis Sci.* 2002;43:3625-3632. **3.** Holden BA, et al. Global prevalence of myopia and high myopia and temporal trends from 2000 through 2050. *Ophthalmol.* 2016;123(5):1036-1044. **4.** Morgan P. Is myopia control the next contact lens revolution? *OPTICIAN* 2016. **5.** Gifford P, Gifford, KL. The future of myopia control contact lenses. *Optom Vis Sci.* 2016;93(4):336-343. **6.** Centers for Disease Control and Prevention. Screen time vs. lean time infographic. <https://www.cdc.gov/nccdphp/dnpao/multimedia/infographics/getmoving.html>. Accessed March 16, 2021. **7.** Wolffsohn JS, Calossi A, Cho P, et al. Global trends in myopia management attitudes and strategies in clinical practice. *Cont Lens Anterior Eye.* 2016;39(2):106-116. **8.** Xu L, et al. High myopia and glaucoma susceptibility: the Beijing Eye Study. *Ophthalmol.* 2007;114(2):216-220. **9.** Filtcroft DI. The complex interactions of retinal, optical, and environmental factors in myopia aetiology. *Prog Retin Eye Res.* 2012;31(6):622-660. **10.** Chen SJ, et al. Prevalence and associated risk factors of myopic maculopathy in elderly Chinese: the Shihpai Eye Study. *Invest Ophthalmol Vis Sci.* 2012;53(8):4868-4873. **11.** Fang Y, Yokoi T, Nagaoka N, et al. Progression of myopic maculopathy during 18-year follow-up. *Ophthalmol.* 2018;125(6):863-877. **12.** Marcus MW, de Vries MM, Junoy Montolio FG, Jansonius NM. Myopia as a risk factor for open-angle glaucoma: a systematic review and meta-analysis. *Ophthalmology.* 2011 Oct;118(10):1989-1994.e2. **13.** Sulley A, et al. Wearer experience and subjective responses with dual focus compared to spherical, single vision soft contact lenses in children during a 3-year clinical trial. AAO 2019 Poster Presentation. **14.** CVI data on file 2018. MiSight 1 day 3-year study report. **15.** Bullimore MA. The Safety of Soft Contact Lenses in Children. *Optom Vis Sci.* 2017 Jun;94(6):638-646. **16.** Gifford KL. Childhood and lifetime risk comparison of myopia control with contact lenses. *Cont Lens Anterior Eye.* 2020 Feb;43(1):26-32. **17.** Walline JJ, Jones LA, Rah MJ, Manny RE, Berntsen DA, Chitkara M, Gaume A, Kim A, Quinn N; CLIP STUDY GROUP. Contact Lenses in Pediatrics (CLIP) Study: chair time and ocular health. *Optom Vis Sci.* 2007 Sep;84(9):896-902. **18.** Tideman JW, et al. Association of axial length with risk of uncorrectable visual impairment for Europeans with myopia. *JAMA Ophthalmol.* 2016;134:1355-1363. **19.** Chamberlain P, et al. Myopia Progression in Children wearing Dual-Focus Contact Lenses: 6-year findings. *Optom Vis Sci.* 2020;97(E-abstract):200038. **20.** Rah MJ, et al. Vision specific quality of life of pediatric contact lens wearers. *Optom Vis Sci.* 2010;87(8):560-566.



Printed on recycled paper.

©2021 CooperVision 10852 10/21



CooperVision®

MiSight® 1 day

for daily wear